




NEHRU COLLEGE OF ENGINEERING AND RESEARCH CENTRE
(NAAC 'A' Accredited & ISO 9001:2015 Certified Institution)
(Approved by AICTE, Affiliated to APJ Abdul Kalam Technological University, Kerala)



6.2.2 The functioning of the institutional bodies is effective and efficient as visible from policies, administrative setup, appointment and service rules, procedures, etc.

S.No	Description	Page No.
1	Organogram	2




PRINCIPAL
Nehru College of Engineering and
Research Centre (Autonomous)
Nila Gardens, Pampady
Thiruvilwamala, Thrissur - 680588



Nehru College of Engineering and Research Centre

NAAC ACCREDITED

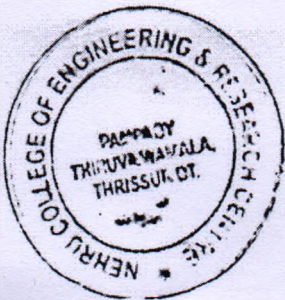
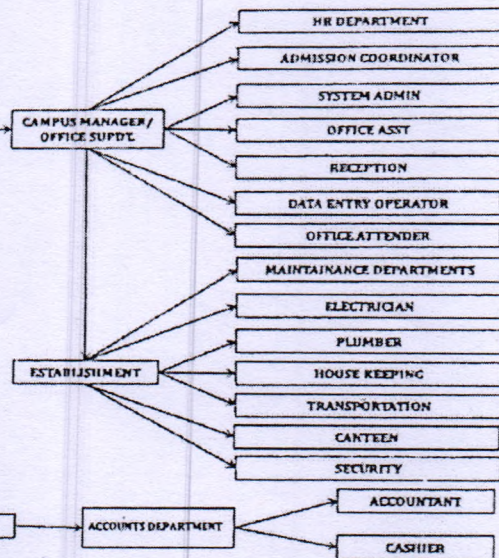
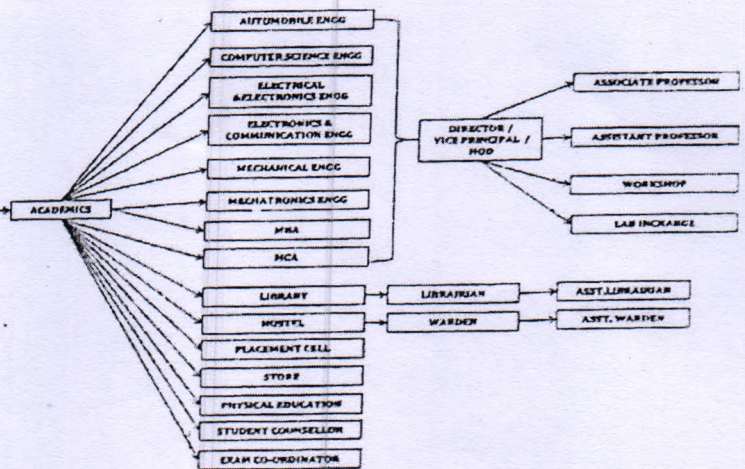
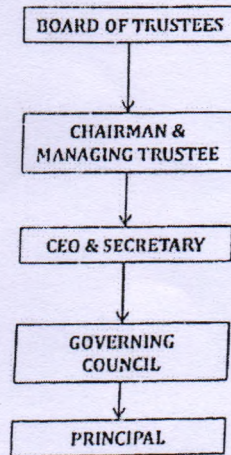
(AN ISO 9001 : 2015 CERTIFIED INSTITUTION)

Approved by AICTE, New Delhi

& Affiliated to APJ AbdulKalam Technological University (KTU)



NEHRU COLLEGE OF ENGINEERING AND RESEARCH CENTRE PAMPADY, THIRUVILWAMALA, THRISSUR - 680588 ORGANIZATIONAL CHART



PRINCIPAL
Nehru College of Engineering and Research Centre (Autonomous)
Nila Gardens, Pampady
Thiruvilwamala, Thirissur - 680588

PRINCIPAL
Nehru College of Engineering and Research Centre
Pampady, Thiruvilwamala, Thirissur
Pin - 680588 Kerala

(Sponsors : Nehru College of Educational and Charitable Trust)

College Campus : Nila Gardens, Pampady, Near Lakkidi Rly. Station, Thiruvilwamala, Thirissur (Dist), Kerala - 680 588
Tel / Fax : +91 4884 - 282070, 284000. E-mail : office@ncerc.ac.in, admissions@ncerc.ac.in, web : www.ncerc.ac.in

